

# MEMO

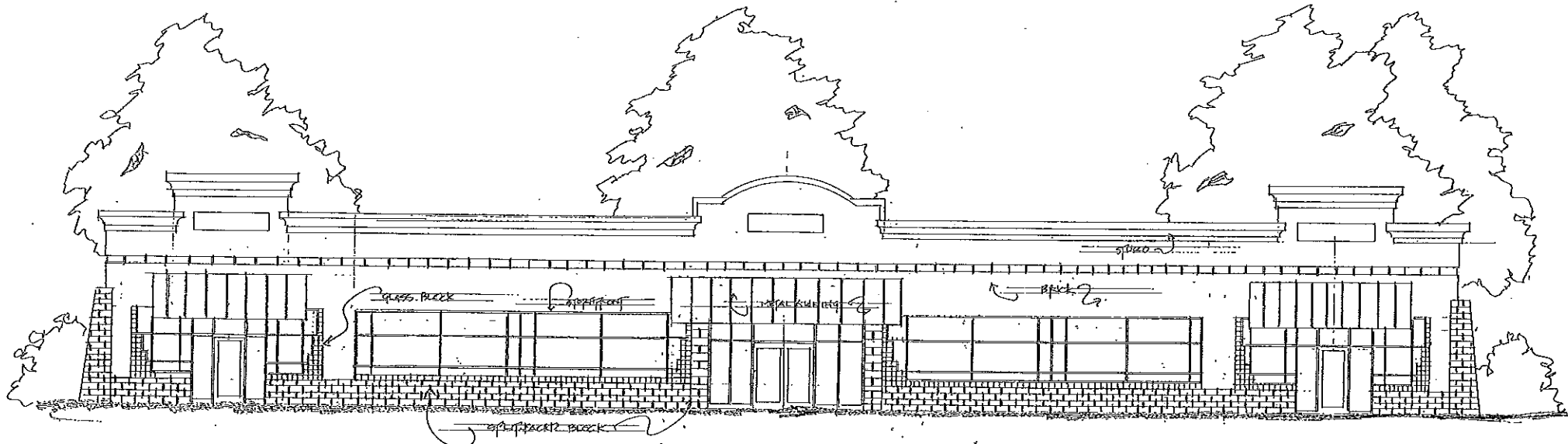
**To:** Madison County Board of Supervisors  
**From:** Scott Weeks  
**Subject:** Site Plan – Fleetway Interstate Center  
**Date:** 01-14-2015

---

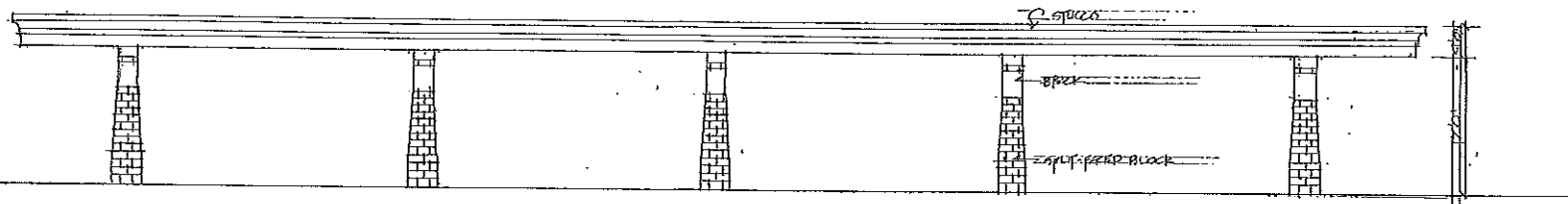
I have included the last page of the site plan attached to the Memo as it was presented to the Planning Commission on 01-08-2015. The sign that was presented in the site plan exceeded the height requirement and would require a Special Exception. The Planning commission voted for the sign being accepted as long as it did not exceed eight feet in height. However, the Board of Supervisors is hereby empowered to grant special permits for a sign up to 40 feet above the surrounding grade. Fleetway Interstate Center will have to file a Special Exception in order for this to be considered.







○ NORTH ELEVATION  
SCALE: 3/16" = 1'0"

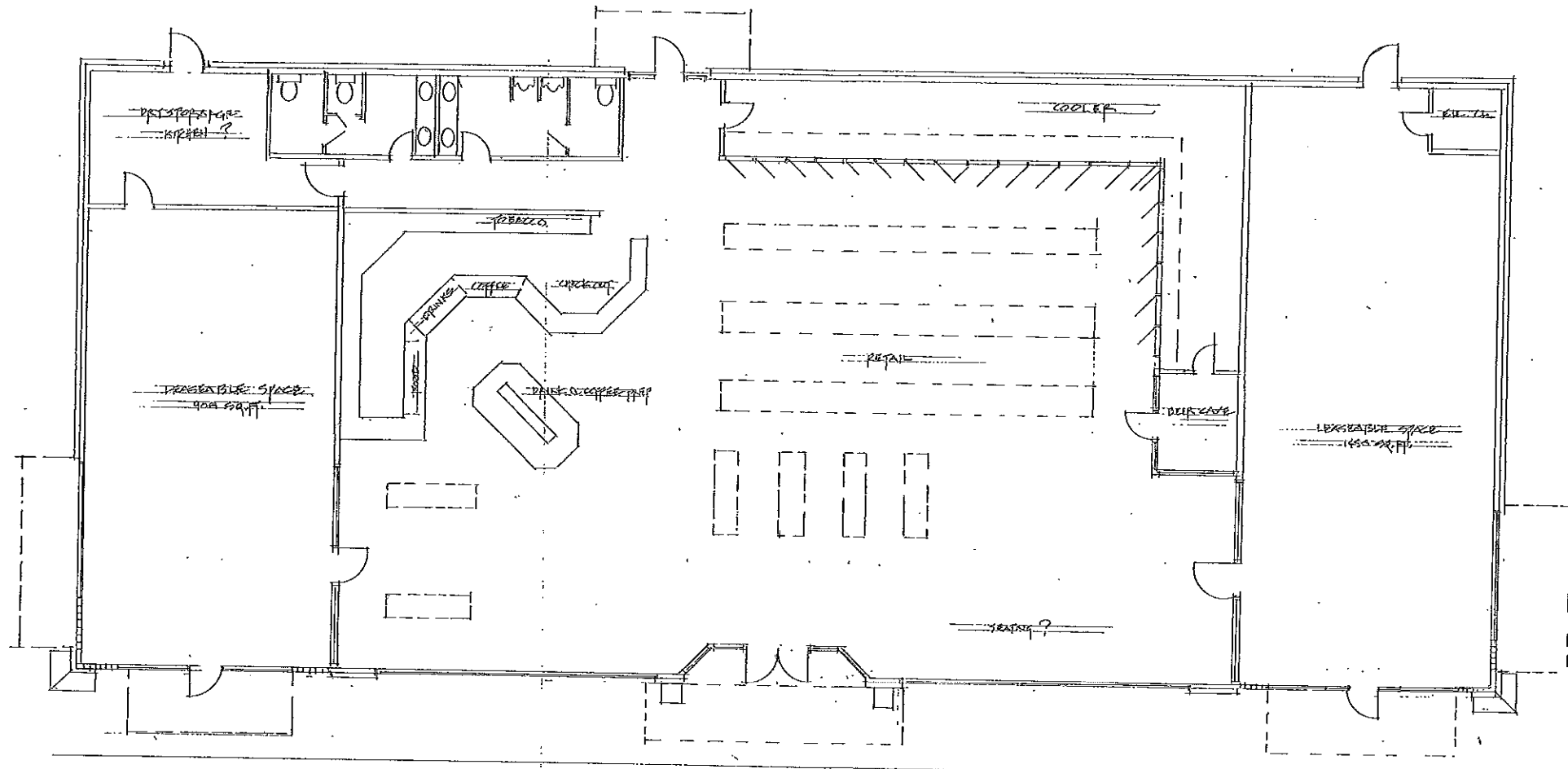


○ CANOPY ELEVATION  
SCALE: 1/8" = 1'0"

REVISIONS	BY

FLEETAY INTERSTATE CENTER  
 GREG AINSWORTH, ARCHITECT

	DRAWN
	CHECKED
	DATE
	SCALE
	JOB NO.
	SHEET

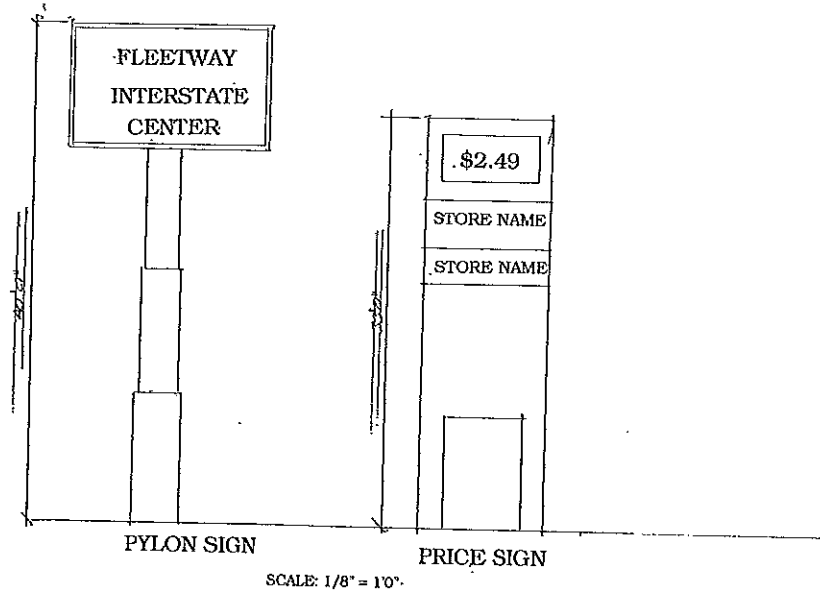
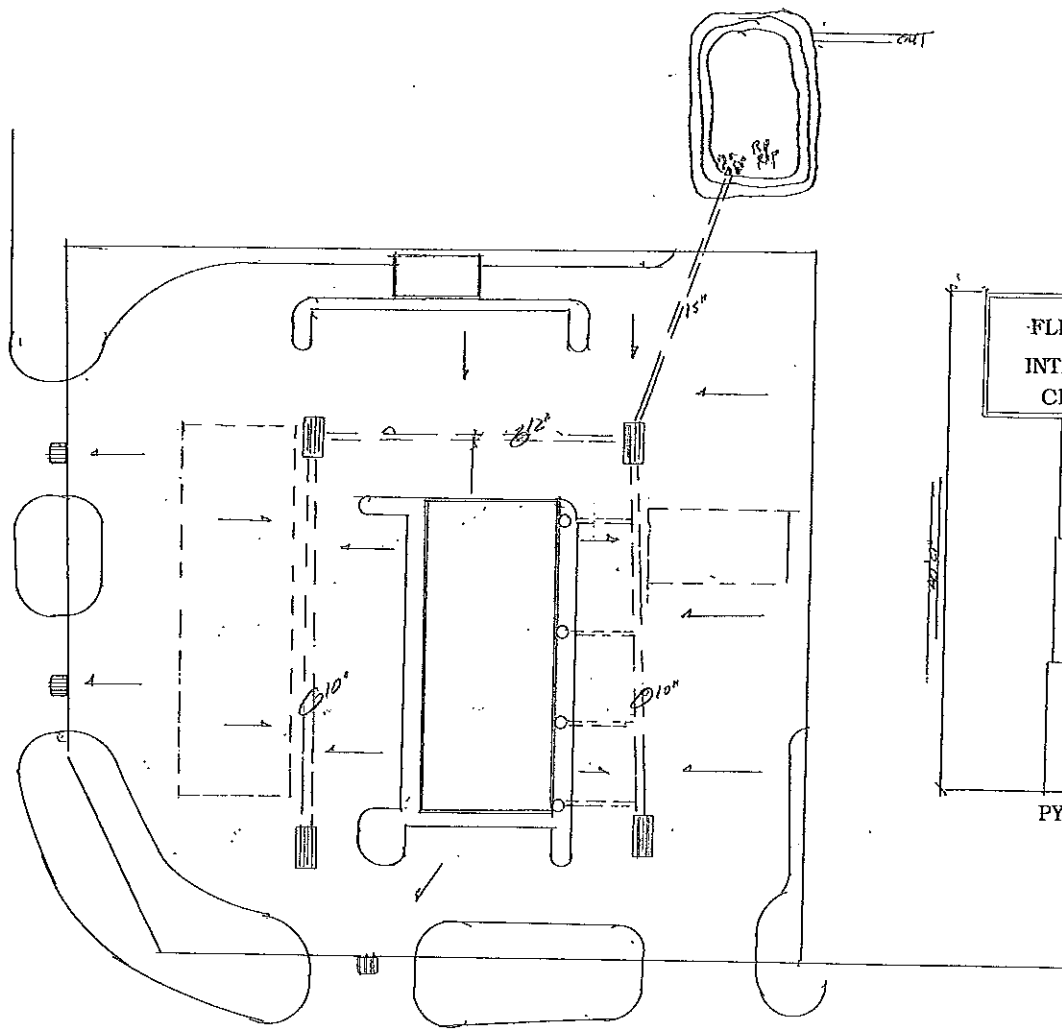


REVISIONS	BY

FLEETWAY INTERSTATE CENTER

⊙ SCHEMATIC FLOOR PLAN

DRAWN
CHECKED
DATE
SCALE
JOB NO.
SHEET



○ PRELIMINARY SITE DRAINAGE

REVISIONS	BY

FLEETWAY INTERSTATE CENTER

	DRAWN
	CHECKED
	DATE
	SCALE
	JOB NO.
	SHEET